

Technical drawing of a rectangular object, possibly a book cover or a piece of paper, showing dimensions and labels. The overall width is 40 units, and the overall height is 174 units. The drawing is divided into sections by dashed lines. The top section has a width of 36 units and a height of 2 units. The bottom section has a width of 36 units and a height of 2 units. The central area is divided into four horizontal sections, each labeled 'Aktien'. The dimensions for these sections are: 36 units wide and 32 units high for the top two sections, and 36 units wide and 32 units high for the bottom two sections. The central area is also divided into four vertical sections, each labeled 'Aktien'. The dimensions for these sections are: 36 units wide and 32 units high for the left two sections, and 36 units wide and 32 units high for the right two sections. The central area is also divided into four diagonal sections, each labeled 'Aktien'. The dimensions for these sections are: 36 units wide and 32 units high for the top-left section, 36 units wide and 32 units high for the top-right section, 36 units wide and 32 units high for the bottom-left section, and 36 units wide and 32 units high for the bottom-right section.

Technical drawing of a rectangular floor plan. The overall dimensions are 40 (width) and 174 (height). The width is divided into three sections: 2, 36, and 2. The height is divided into six sections, each labeled 32, with a total height of 174. The plan is divided into five horizontal sections, each labeled 'Akten'. A dashed diagonal line runs from the top-left corner to the bottom-right corner. The drawing is enclosed in a dashed rectangular border.

Technical drawing of a rectangular structure, likely a cross-section of a building or a container. The drawing shows a rectangle with a dashed diagonal line from the top-left corner to the bottom-right corner. The word "Ablage" is written inside the rectangle. Dimensions are indicated by arrows and numbers: the total width is 40, divided into three segments of 2, 36, and 2; the total height is 1.74, divided into three segments of 2, 20, and 2. A small circle is located near the bottom-left corner. The drawing is labeled "Fig. 1" at the bottom right.

Technical drawing of a rectangular structure, likely a wall or partition, showing dimensions and internal layout. The overall width is 80 units, divided into three sections: 2 units on the left, 76 units in the center, and 2 units on the right. The overall height is 174 units, divided into six horizontal sections of 30 units each, with a 2-unit section at the bottom. The structure is divided into two vertical panels, each labeled 'Pendel-registratur' (Pendulum register). Dashed diagonal lines cross the panels, and a small circle is located in the lower right panel. The drawing is labeled '1.74' on the left side.

Technical drawing of a rectangular building facade. The drawing is divided into five horizontal sections by dashed lines. Each section is labeled 'Pendel-registratur'. The total height of the facade is indicated as 1.74. The width of the facade is indicated as 40. The drawing includes dimension lines and arrows indicating measurements.

Technical drawing of a rectangular structure, likely a wall or partition, showing dimensions and labels. The drawing is oriented vertically. The overall width is 40 units, divided into three sections: 2 units on the left, 36 units in the center, and 2 units on the right. The overall height is 174 units, divided into five sections: 2 units at the top, followed by four sections of 30 units each, and 2 units at the bottom. The structure is divided into five horizontal sections, each labeled "Pendel-registratur". A dashed diagonal line runs from the top-left corner to the bottom-right corner. The drawing includes various construction lines and dimensions, indicating a detailed architectural or engineering plan.

Hinweis
Der Planung liegen folgende Daten / Unterlagen von xyz zu Grunde: -

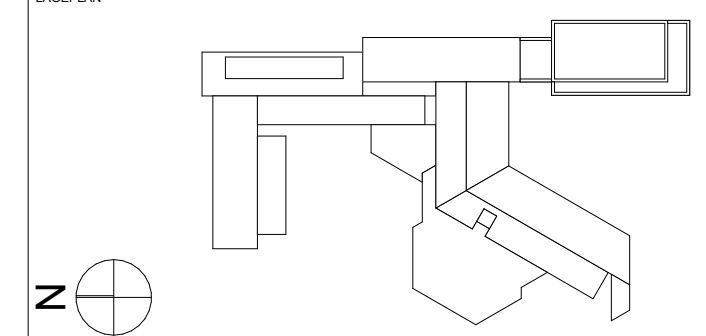
[illegible]

INDEX	DATUM	GEZ.	BESCHREIBUNG
			Alle Maße sind am Bau zu prüfen. Bestandsabhängige Toleranzen des Altbaus sind zu berücksichtigen. Für Maßfehler haftet allein der Auftragnehmer. Maßunstimmigkeiten sind sofort mit dem Architekten zu klären. Konstruktions- und fertigungstechnische Bedenken sind dem Architekten und der Bauleitung rechtzeitig mitzuteilen und zu begründen.

PLANNUMMER	
------------	--

A	5	-	-	D	E	0	4	-	2	0		F
PLANER	LP	BAUTEIL	GESCHOSS	PLANART / PLANINHALT	LFD. NUMMER	MASSTAB	INDEX	STATUS				

LAGEPLAN



BAUHERR
Stadtverwaltung Ingelheim
Amt Bauen, Planen, Umwelt

Fridtjof-Nansen-Platz 1
55218 Ingelheim am Rhein
stadtverwaltung@ingelheim.de

PLANUNG

Just/
Architekten

Kaiserstraße 68
60329 Frankfurt am Main
+49 (0)69 900 160 200
mail@justarchitekten.de

PLANINHALT

Unterschrift: FREIGABE PLANUNG BAUHERR

LEISTUNGSPHASE	STATUS
----------------	--------

ERSTELLT	EXPORT	MASZTAB 1:20	GEZ.	GEPRÜFT	PROJEKT NR. 2305	BLATTFORMAT DIN A2
----------	--------	-----------------	------	---------	---------------------	-----------------------

Urheberrecht nach DIN 34 vorbehalten